

Fall 2020

**Annual Education
Results Report**





“

The following data provides information pertinent to FMHS' Three Year Education Plan. This is the baseline information that provides direction for areas that we are emphasize within our two goals, the strategies for growth and the measurements for success.

Safe and Caring Schools Data

Percentage of Parent, Student and Teacher agreement that students are safe at school:

28 Parents: 69%

103 Students: 66%

15 Teachers: 92%

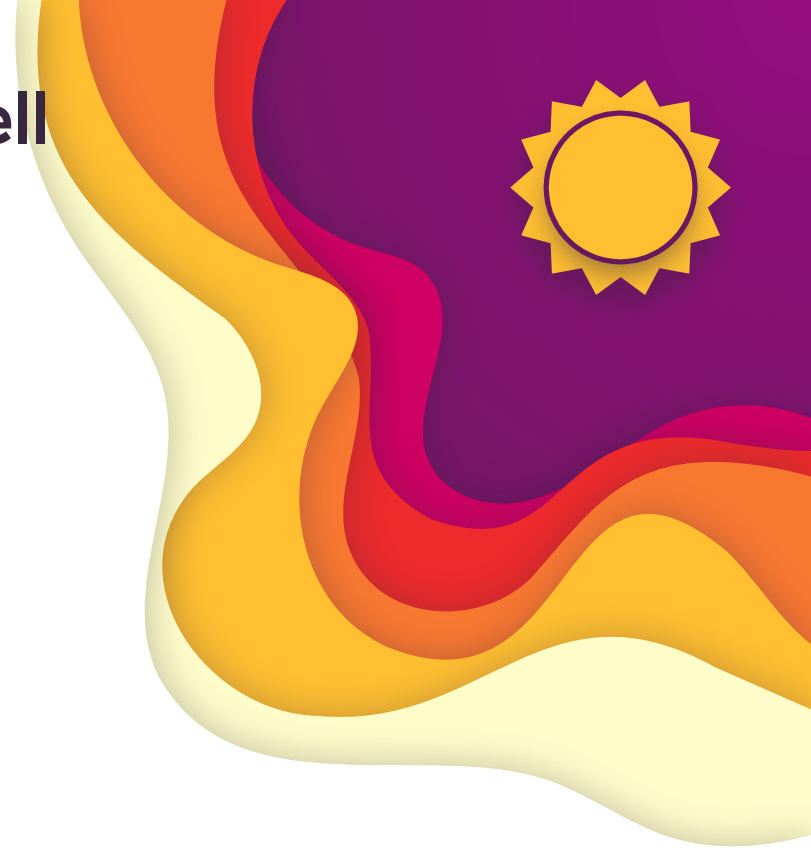


Students Treat Each Other Well At FMHS

Parents: 48% agree or strongly agree.

Students: 67% agree or strongly agree.

Teachers: 87% agree or strongly agree.

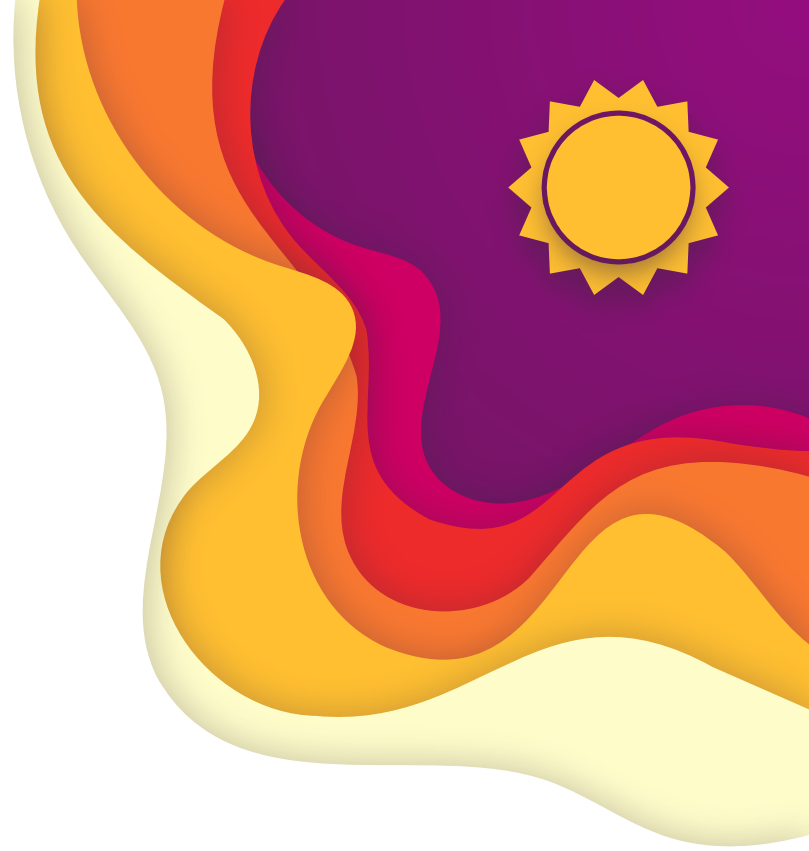


Teachers Care About Students At FMHS

Parents: 48% agree or strongly agree.

Students: 62% agree or strongly agree.

Teachers: 93% agree or strongly agree.

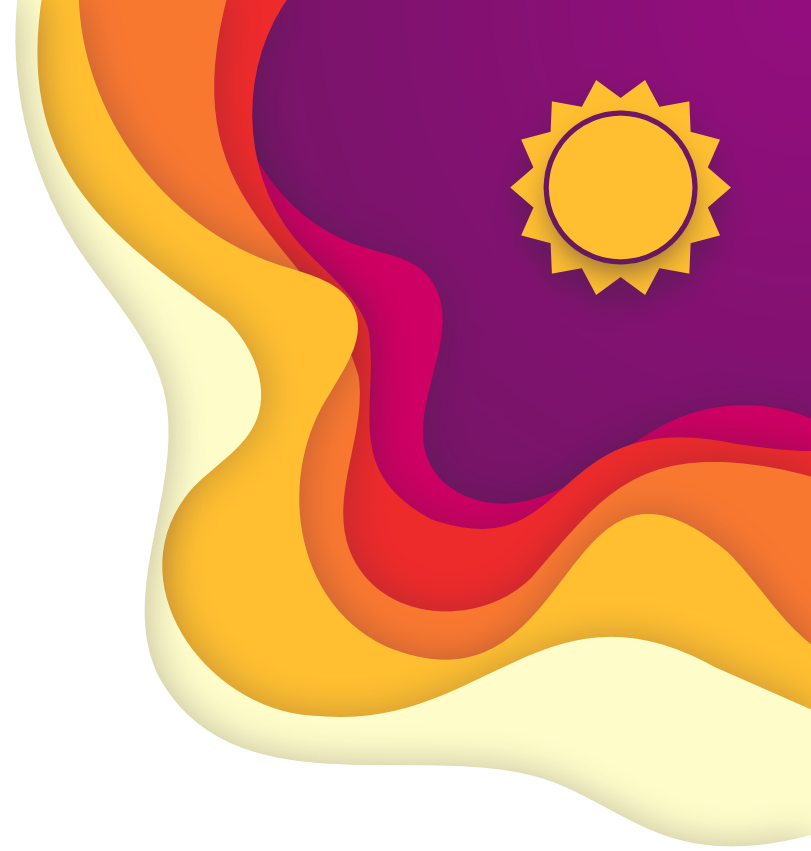


Students Are Treated Fairly At FMHS

Parents: 67% agree or strongly agree.

Students: 67% agree or strongly agree.

Teachers: 92% agree or strongly agree.



Overall Quality of Basic Education Data

Percentage of Parent, Student and Teacher agreement that students are satisfied with the overall quality of basic education:

28 Parents: 70%

104 Students: 73%

15 Teachers: 99%

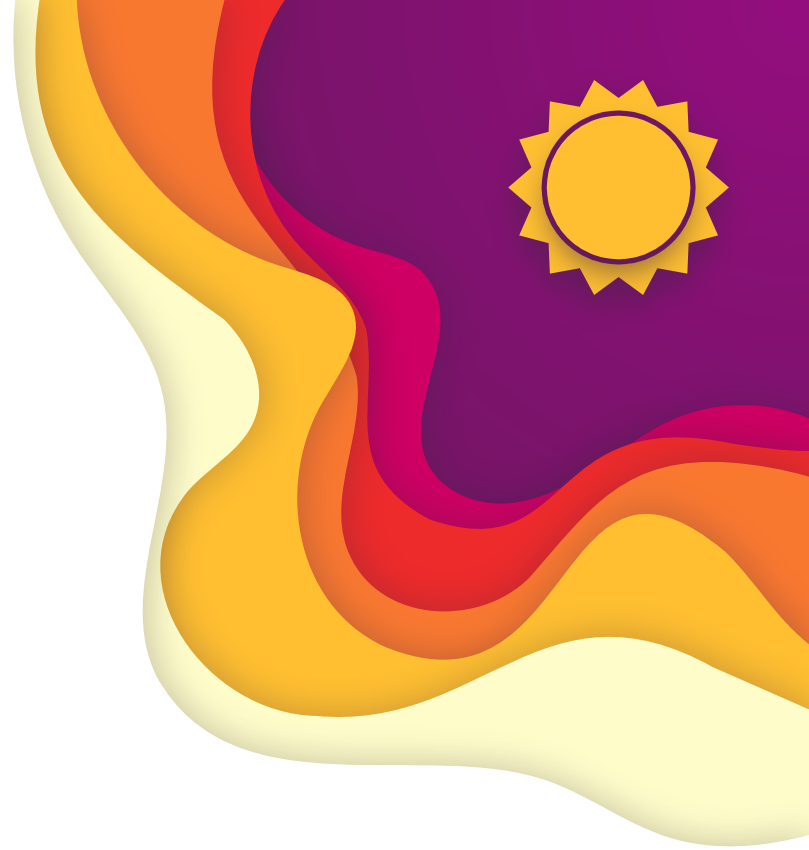


Student Clearly Understands Learning Expectations

Parents: 75% agree or strongly agree.

Students: 71% agree or strongly agree.

Teachers: 93% agree or strongly agree.



Students Find Work Challenging At FMHS

Parents: 90% agree or strongly agree.

Students: 81% agree or strongly agree.

Teachers: 100% agree or strongly agree.



Students Find School Work Interesting At FMHS

Parents: 50% agree or strongly agree.

Students: 50% agree or strongly agree.

Teachers: 100% agree or strongly agree.



Students Are Learning What They Need To Know At FMHS

Parents: 75% agree or strongly agree.

Students: 76% agree or strongly agree.

Teachers: 100% agree or strongly agree.



Satisfied with the Quality of Education At FMHS

Parents: 72% agree or strongly agree.

Students: 88% agree or strongly agree.

Teachers: 100% agree or strongly agree.



Satisfied With The Quality of Teaching At FMHS

Parents: 61% agree or strongly agree.

Students: 74% agree or strongly agree.

Teachers: 100% agree or strongly agree.



At Risk Students Data

Percentage of Parent, Student and Teacher agreement that programs for students at risk are easy/timely to access:

28 Parents: 54%

104 Students: 62%

15 Teachers: 93%

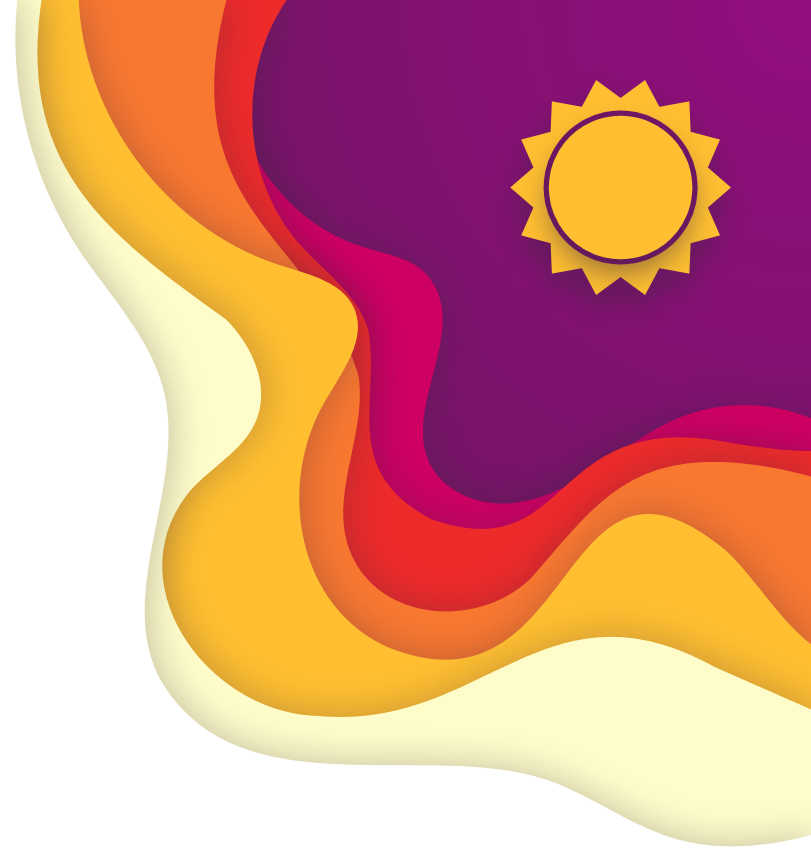


Students Have Access To Teachers To Help When They Need It?

Parents: 56% agree or strongly agree.

Students: 72% agree or strongly agree.

Teachers: 93% agree or strongly agree.



Students Can Access Programs to Get Help With School Work

Parents: 50% agree or strongly agree.

Students: 64% agree or strongly agree.

Teachers: 86% agree or strongly agree.



Students Can Get Help With Non-School Problems At School

Parents: 57% agree or strongly agree.

Students: 53% agree or strongly agree.

Teachers: 100% agree or strongly agree.



Citizenship Data

Percentage of Parent, Student and Teacher agreement that students model the characteristics of active citizenship:

28 Parents: 54%

104 Students: 63%

15 Teachers: 91%

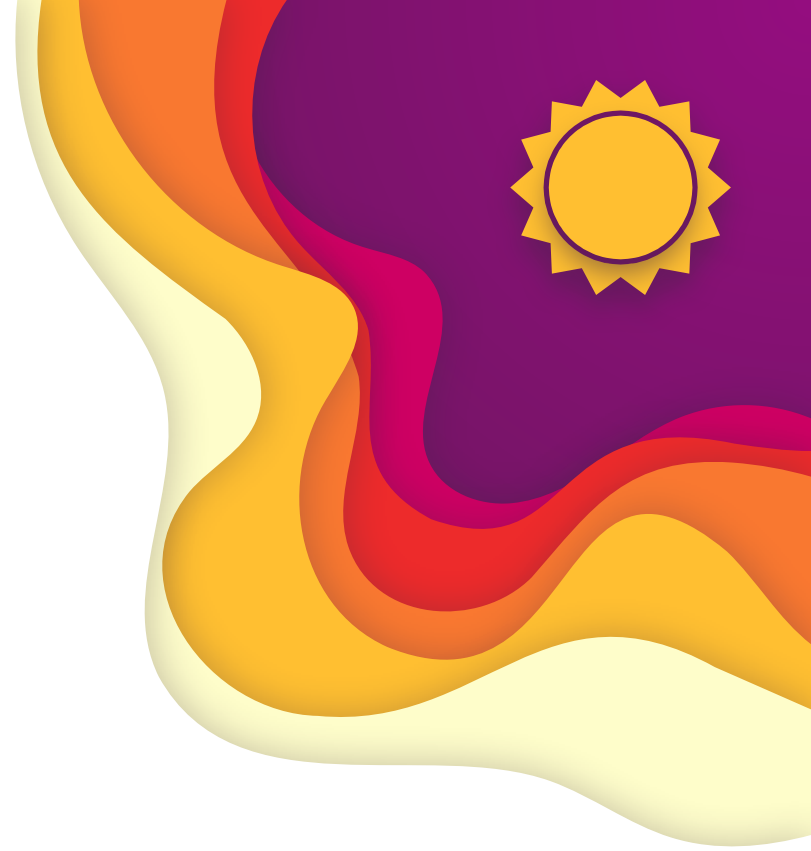


Students Help Each Other at FMHS?

Parents: 68% agree or strongly agree.

Students: 62% agree or strongly agree.

Teachers: 93% agree or strongly agree.

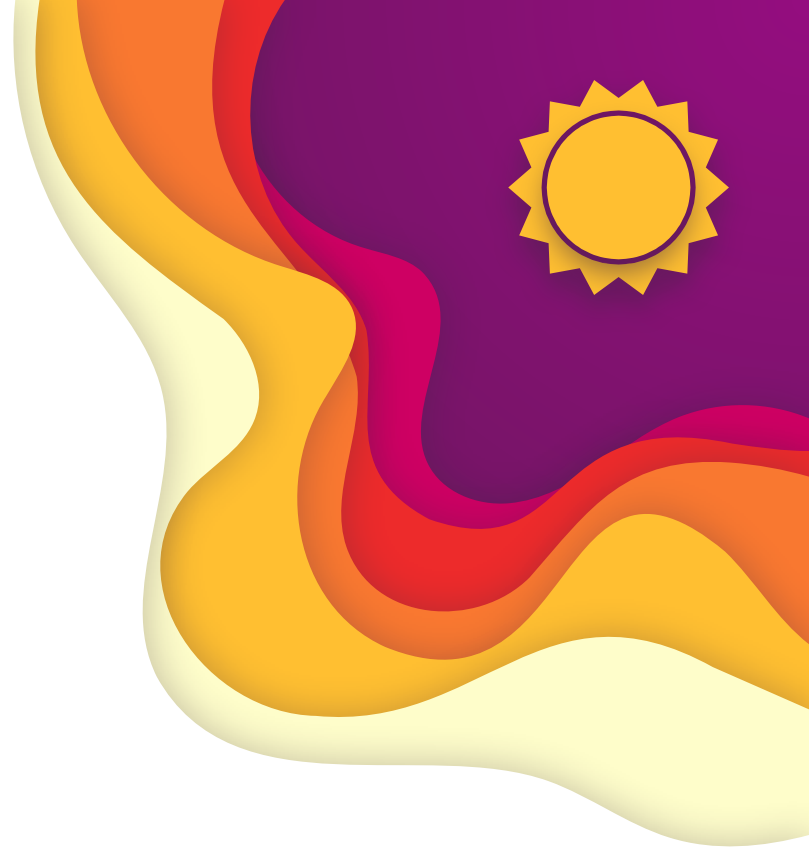


Students Respect Each Other?

Parents: 63% agree or strongly agree.

Students: 42% agree or strongly agree.

Teachers: 87% agree or strongly agree.

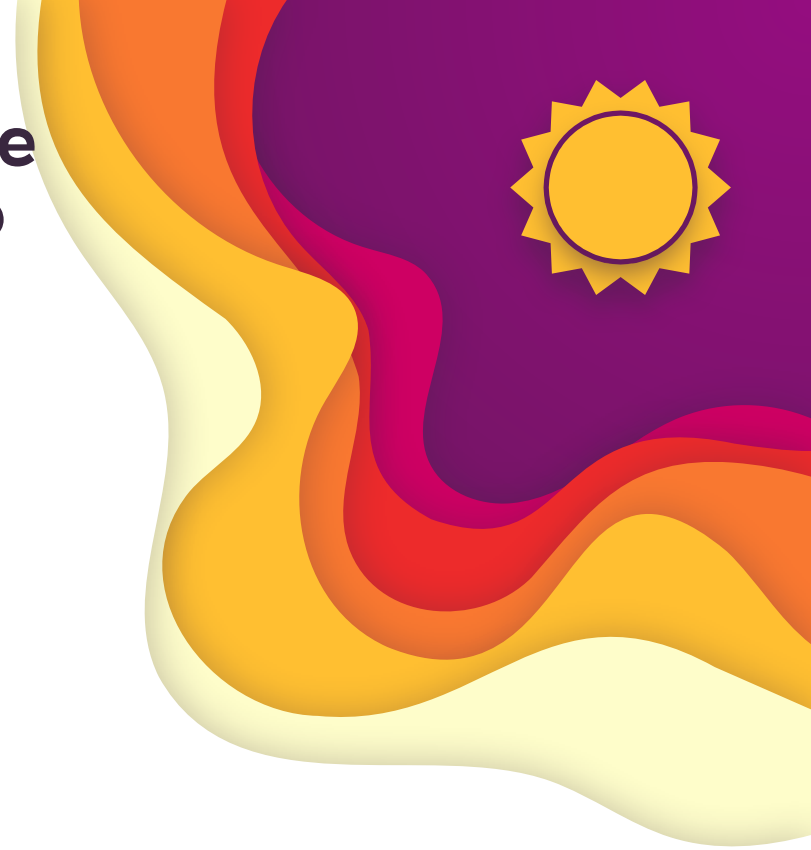


Students Are Encouraged To Be Involved in Activities that Help the Community?

Parents: 29% agree or strongly agree.

Students: 44% agree or strongly agree.

Teachers: 93% agree or strongly agree.



School Improvement Data



School Improvement Data

Percentage of Parent and Teacher agreement that FMHS has improved in the last three years:

28 Parents: 4%

15 Teachers: 40%

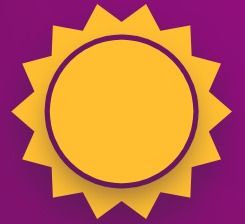


School Improvement Data

Percentage of Parent and Teacher agreement that FMHS has stayed the same in the last three years:

28 Parents: 39%

15 Teachers: 47%



School Improvement Data

Percentage of Parent and Teacher agreement that FMHS has declined in the last three years:

28 Parents: 57%

15 Teachers: 0%



Provincial Achievement Test Data



English 9 PAT

(results for # writing)



	FMHS 2018	Alberta 2018	FMHS 2019	Alberta 2019
Students Enrolled	109	46,822	108	47,465
Students Writing	108	41,631	103	42,002
Acceptable Standard	90.7%	85.6%	86.4%	84.9%
Excellence Standard	15.7%	16.5%	10.7%	16.7%
Below Acceptable	9.3%	14.4%	13.6%	15.1%



Mathematics 9 PAT

(results for # writing)



	FMHS 2018	Alberta 2018	FMHS 2019	Alberta 2019
Students Enrolled	106	46,603	105	46,764
Students Writing	103	41,359	99	41,612
Acceptable Standard	76.7%	66.7%	66.7%	67.4%
Excellence Standard	15.5%	16.9%	17.2%	21.4%
Below Acceptable	23.3%	33.3%	33.3%	32.6%



Science 9 PAT

(results for # writing)

	FMHS 2018	Alberta 2018	FMHS 2019	Alberta 2019
Students Enrolled	110	46,810	108	47,465
Students Writing	105	41,978	103	42,002
Acceptable Standard %	92.4%	84.4%	94.3%	84.5%
Excellence Standard %	35.2%	27.2%	38.1%	29.6%
Below Acceptable %	7.6%	15.6%	5.7%	15.5%



Social 9 PAT

(results for # writing)

	FMHS 2018	Alberta 2018	FMHS 2019	Alberta 2019
Students Enrolled	109	46,840	108	47,496
Students Writing	106	40,653	105	42,336
Acceptable Standard %	73.6%	74.6%	61.9%	77.0%
Excellence Standard %	16.0%	24.0%	11.4%	23.1%
Below Acceptable %	26.4%	25.4%	38.1%	23.0%



Diploma Examination Data



English 30-1 DIP

(results for # writing)

	FMHS 2018	Alberta 2018	FMHS 2019	Alberta 2019
Students Writing	57	30,393	79	29,832
Acceptable Standard	93.0%	87.5%	78.5%	86.8%
Excellence Standard	3.5%	13.2%	1.3%	12.3%
School Awarded Acceptable	100.0%	97.9%	100.0%	98.0%
School Awarded Excellence	43.9%	34.5%	38.0%	35.1%



English 30-2 DIP

(results for # writing)

	FMHS 2018	Alberta 2018	FMHS 2019	Alberta 2019
Students Writing	49	16,184	48	16,640
Acceptable Standard	89.8%	88.0%	85.4%	87.1%
Excellence Standard	6.1%	13.1%	6.3%	12.1%
School Awarded Acceptable	98.0%	95.9%	95.8%	96.1%
School Awarded Excellence	14.3%	15.2%	10.4%	15.4%



Mathematics 30-1 DIP

(results for # writing)

	FMHS 2018	Alberta 2018	FMHS 2019	Alberta 2019
Students Writing	15	20,148	31	19,389
Acceptable Standard	86.7%	77.8%	64.5%	77.8%
Excellence Standard	40.0%	35.3%	19.4%	35.1%
School Awarded Acceptable	93.3%	96.1%	96.8%	96.2%
School Awarded Excellence	40.0%	52.3%	38.7%	51.6%



Mathematics 30-2 DIP

(results for # writing)



	FMHS 2018	Alberta 2018	FMHS 2019	Alberta 2019
Students Writing	48	14,362	43	14,465
Acceptable Standard	75.0%	74.2%	72.1%	76.5%
Excellence Standard	22.9%	16.4%	9.3%	16.8%
School Awarded Acceptable	93.8%	94.4%	93.0%	94.3%
School Awarded Excellence	20.8%	26.9%	14.0%	28.6%



Social 30-1 DIP

(results for # writing)

	FMHS 2018	Alberta 2018	FMHS 2019	Alberta 2019
Students Writing	52	21,793	74	21,610
Acceptable Standard	71.2%	86.2%	51.4%	86.6%
Excellence Standard	3.8%	17.7%	2.7%	17.0%
School Awarded Acceptable	100.0%	99.0%	98.6%	99.1%
School Awarded Excellence	48.1%	43.3%	50.0%	43.6%



Social 30-2 DIP

(results for # writing)

	FMHS 2018	Alberta 2018	FMHS 2019	Alberta 2019
Students Writing	50	20,391	57	20,758
Acceptable Standard	66.0%	78.8%	43.9%	77.8%
Excellence Standard	2.0%	12.2%	3.5%	12.2%
School Awarded Acceptable	98.0%	95.8%	91.2%	96.4%
School Awarded Excellence	14.0%	19.6%	10.5%	20.2%



Biology 30 DIP

(results for # writing)

	FMHS 2018	Alberta 2018	FMHS 2019	Alberta 2019
Students Writing	43	23,026	48	22,442
Acceptable Standard	86.0%	86.6%	93.8%	83.9%
Excellence Standard	32.6%	36.6%	25.0%	35.5%
School Awarded Acceptable	97.7%	97.1%	100.0%	97.6%
School Awarded Excellence	60.5%	50.4%	47.9%	49.3%



Chemistry 30 DIP

(results for # writing)



	FMHS 2018	Alberta 2018	FMHS 2019	Alberta 2019
Students Writing	35	18,770	38	18,525
Acceptable Standard	91.4%	83.6%	94.7%	85.7%
Excellence Standard	51.4%	38.3%	44.7%	42.5%
School Awarded Acceptable	100.0%	97.1%	97.4%	97.3%
School Awarded Excellence	54.3%	52.7%	34.2%	53.9%



Physics 30 DIP

(results for # writing)

	FMHS 2018	Alberta 2018	FMHS 2019	Alberta 2019
Students Writing	18	9,679	22	9,247
Acceptable Standard	83.3%	86.2%	95.5%	87.5%
Excellence Standard	44.4%	43.6%	22.7%	43.5%
School Awarded Acceptable	100.0%	97.4%	100.0%	97.8%
School Awarded Excellence	38.9%	58.3%	50.0%	58.5%



Science 30 DIP

(results for # writing)

	FMHS 2018	Alberta 2018	FMHS 2019	Alberta 2019
Students Writing	6	9,426	14	9,676
Acceptable Standard	50.0%	85.4%	78.6%	85.7%
Excellence Standard	0.0%	31.5%	7.1%	31.2%
School Awarded Acceptable	100.0%	96.6%	92.9%	96.6%
School Awarded Excellence	16.7%	39.6%	50.0%	38.1%

